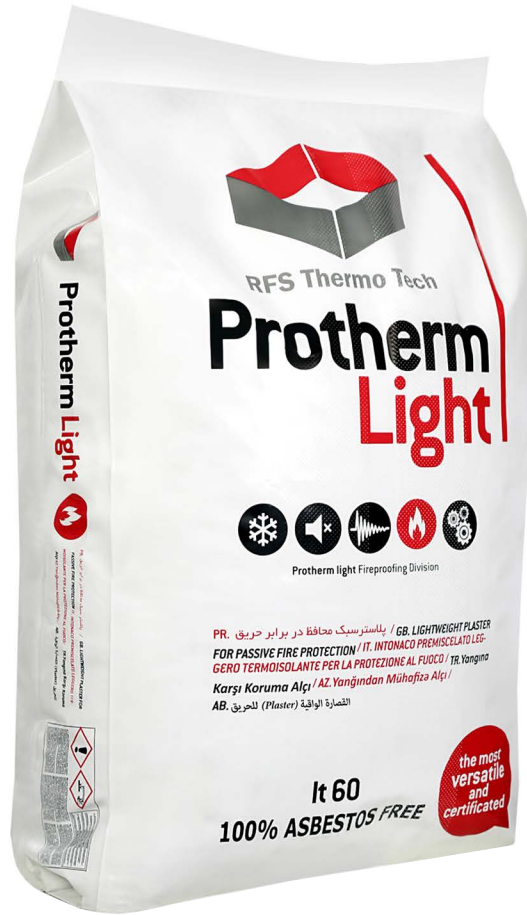
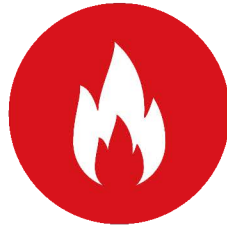


RFS Thermotech



%100
Asbestos
free

THE
MOST
CERTIFICATED



Protherm Light

PASSIVE FIRE PROTECTION OF STRUCTURES

What is **Protherm Light**

The long lasting experience of Edilteco as a world manufacturer of lightweight and thermo-insulating mortars has led to the development of the new **Protherm light** products range to be used for the passive fire protection of the buildings. Our purpose is always the same: to develop products and building equipments for the wellness and safety of the people. The **Protherm light** range provides to professionals all the fireproofing equipments for the fire protection of the buildings such as airports, petrochemical industries, hospitals, schools, tunnels, skyscrapers and residential complex.

This range is the result of the constant technological development, aimed to save human lives and to protect the infrastructural assets.



Protherm Light

A complete range of plasters for fire protection.



FOR THE FIRE PROTECTION OF **INDUSTRIES' BUILDINGS, AIRPORTS, HOSPITALS, SCHOOLS, MALLS, UNDERGROUND PARKINGS, TUNNELS ...**

Protherm Light HAS BEEN USED IN ALL DIFFERENT TYPES OF BUILDING AROUND THE GLOBE

EDILTECO REFERENCES



INDUSTRIAL Building - PANAMA



HOSPITAL - ROMANIA



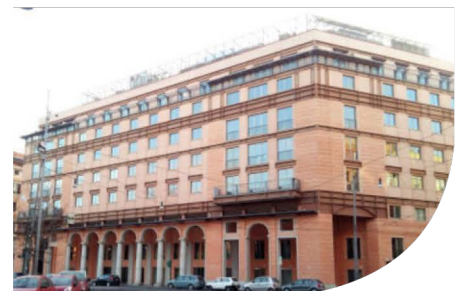
"CIRCONVALLAZIONE NORD" TUNNEL LINING - ROME



AIRPORT - BARI



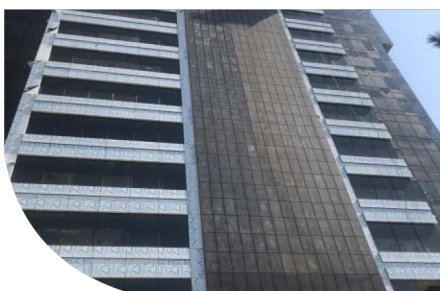
"MASERATI" FACTORY - MODENA



POST OFFICE - CATANIA



"Jahan Koudak" Insurance Building - TEHRAN



"Golrang" office Building - TEHRAN



"Bahar" Shopping Center - TEHRAN

Protherm light

THE MOST VERSATILE AND CERTIFICATED PLASTER FOR FIRE PROTECTION ON THE MARKET

Lightweight premixed thermal insulating plaster based on specially treated light weight beads, water bindings and special additives for mechanical application.

- Available colours: grey and white.
- Fireproofing protective system, specifically designed to improve the passive fire resistance of structural elements made of steel, brick, normal and pre-stressed reinforced concrete and on buildings for civil and industrial uses both internally and externally.
- For indoor and outdoor use.
- It does not contain fibres.



UPDATED according to the EUROPEAN REGULATION ENV 13381

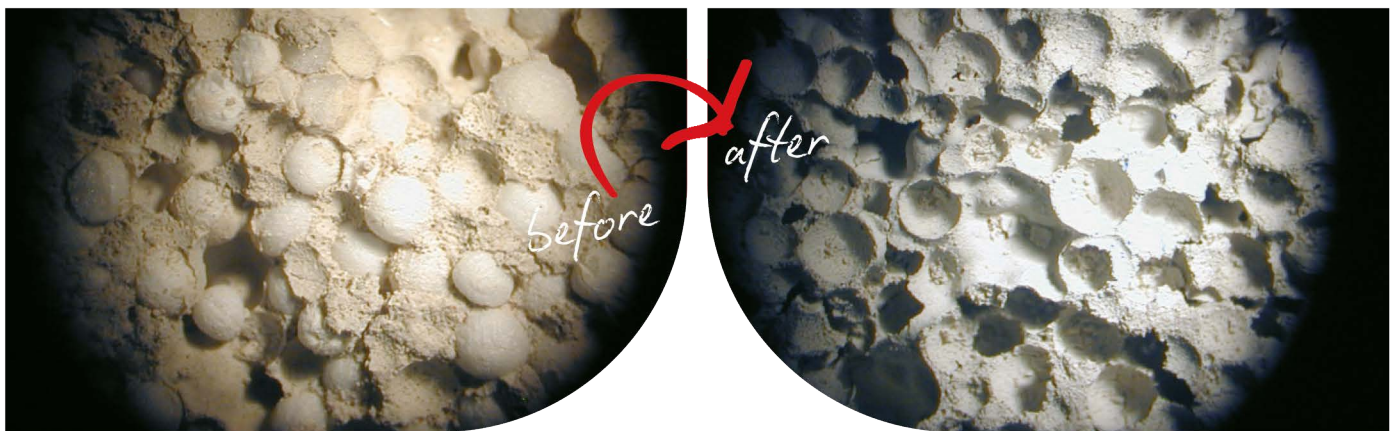
Protherm light Plaster for the passive fire protection of structures

TECHNICAL CHARACTERISTICS	VALUE	M.U.	REGULATION
Available colour	grey white	-	-
Mass (dry)	350	kg/m ³	-
Compressive strength	0,97	N/mm ²	UNI EN ISO 12390-3
Flexural strength	0,35	N/mm ²	UNI EN ISO 12390-5
Thermal conductivity λ_0	0,079	W/mK	UNI EN 12667
Fire reactivity	A1	-	UNI EN 13501-1
Packaging	18	kg/bag	-

APPLICATION

Laying surface	According to the classification report
Minimum and maximum thicknesses	According to the classification report
Drying	On the surface: 24 hours at 20 °C with normal ventilation

When **Protherm light** is exposed to fire, the heat is absorbed by the product and the light beads sublimate without flame and smoke emission. This creates a structure composed of the cement binder and the empty cells left by the sublimated beads. Therefore the plaster changes its physical characteristics and becomes a layer of material with high temperature resistance. This advantage can be added to that resulting from the crystallized water loss and to the thickness of the material. The photos show the plaster before and after exposure to flame and heat; it can be noted how the beads are replaced by the void cells.



**Protherm light is safe to apply without the need for special equipment.
It is widely recommended to read the application manual before utilization.**

JAS-ANZ



tecnalia
certificación

EOTA
European Organisation
for Technical Assessment



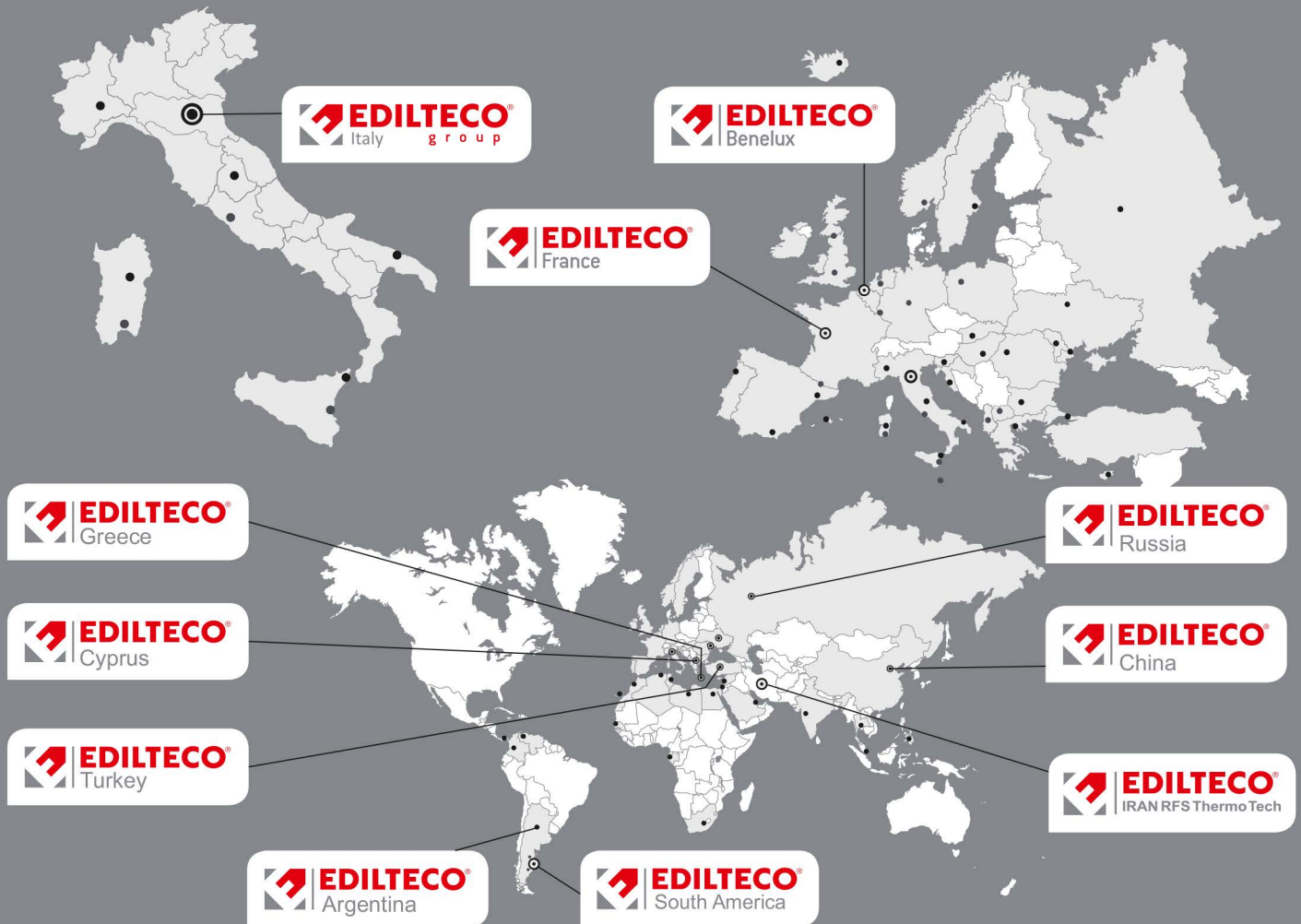
CSI
Certificazione e Testing

BHRC



EDILTECO, AN INTERNATIONAL SUCCESS

Europe, Asia, America, Africa



○ Edilteco Group / Partners / Distributors



360° Insulation



RFS ThermoTech

Address: Unit 3, No. 3, 12th Alley Hasan Seif. St. Shahrak gharb,
Tehran - Iran

Tel & Fax: +98(21) 88086208

info@ramansazeh.com www.ramansazeh.com

